

Waterford

Total Sq. Ft. 3,379

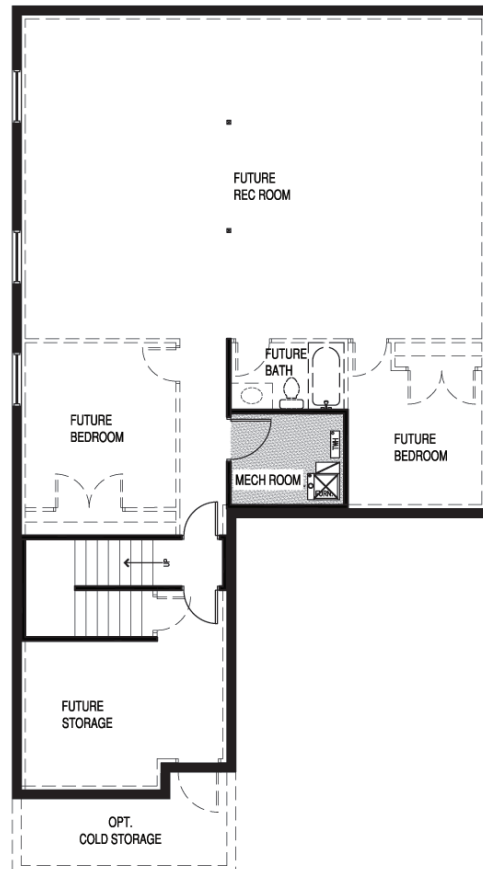
Finished Sq. Ft. 1,770

Bedrooms: 2/3

Bathrooms: 2



BASEMENT FLOOR | 1,677 SQ. FT.



Plan FEATURES

- Continuous Grand Room
- Owner's Walk In Closet
- Mechanical Room Downstairs
- Mud Room off of Garage





TETON
VILLAGE

Traditional



Craftsman



Farmhouse



Waterford




wright HOMES

* All renderings of exteriors and floor plans are artist conceptions and may vary from actual home as built. Dimensions, options, features and specifications are approximate and subject to field variation, as well as change without notice.