

# Kendall

Total Sq. Ft. 4,155

Finished Sq. Ft. 2,626

Bedrooms: 2/3

Bathrooms: 2.5/3

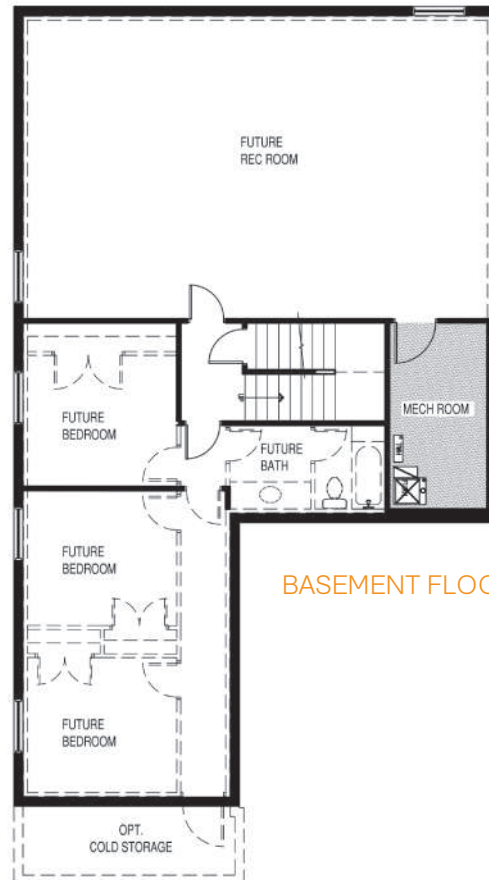
MAIN FLOOR | 1,713 SQ. FT.



UPPER FLOOR | 761 SQ. FT.



BASEMENT FLOOR | 1,681 SQ. FT.



## Plan FEATURES

- Owner's Walk In Closet
- Large Corner Pantry
- Open Upper Loft
- Open Grand Entry





TETON  
VILLAGE

Kendall

Traditional



Craftsman



Farmhouse



wright HOMES

\* All renderings of exteriors and floor plans are artist conceptions and may vary from actual home as built. Dimensions, options, features and specifications are approximate and subject to field variation, as well as change without notice.