

Hampton

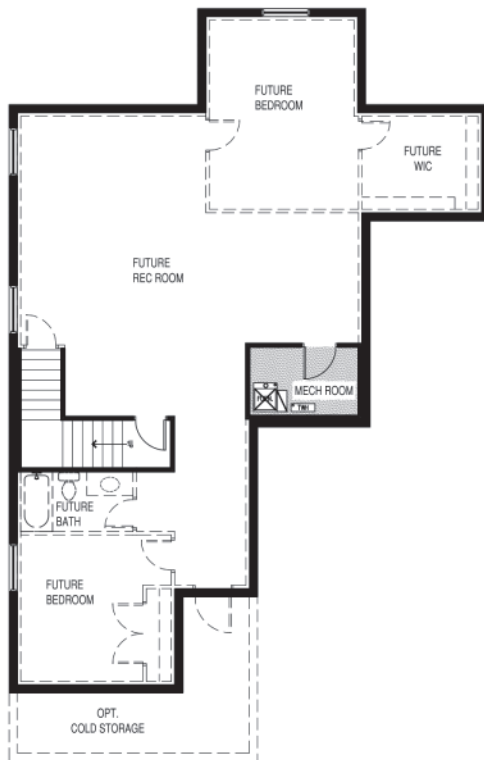
Total Sq. Ft. 4,255

Finished Sq. Ft. 2,887

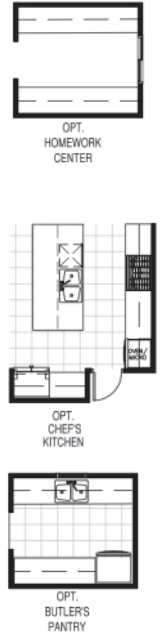
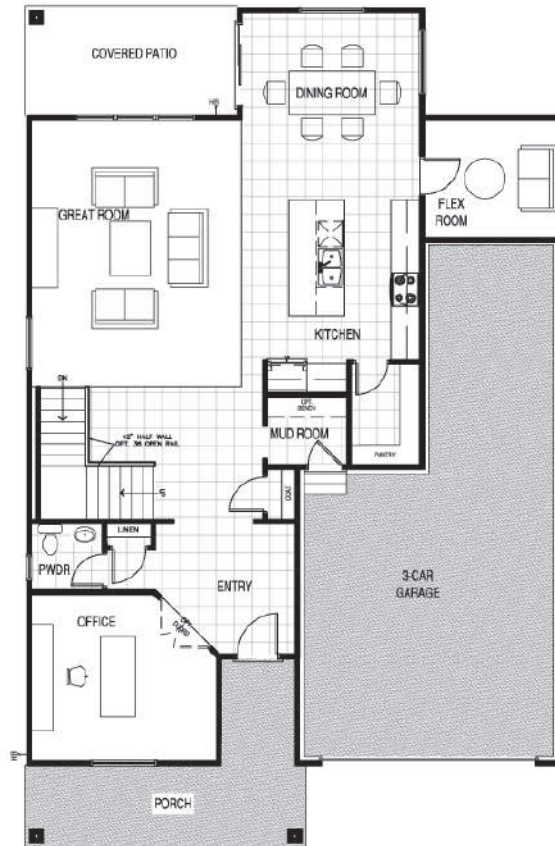
Bedrooms: 3/4

Bathrooms: 2.5

BASEMENT FLOOR | 1,368 SQ. FT.



MAIN FLOOR | 1,474 SQ. FT.



UPPER FLOOR | 1,413 SQ. FT.



Plan FEATURES

- Continuous Grand Room
- Large Pantry
- Open Loft
- Covered Backyard Patio



JACKSON

Hampton

Traditional



Craftsman



Farmhouse



* All renderings of exteriors and floor plans are artist conceptions and may vary from actual home as built. Dimensions, options, features and specifications are approximate and subject to field variation, as well as change without notice.